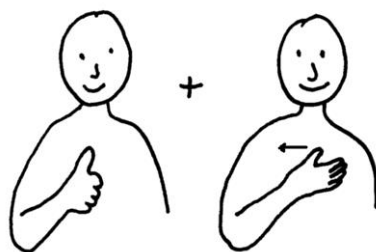


Welcome



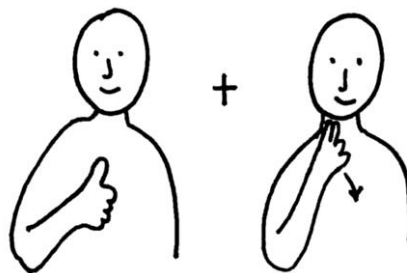
Beckon the person(s) to you, using both your hands.

Good morning



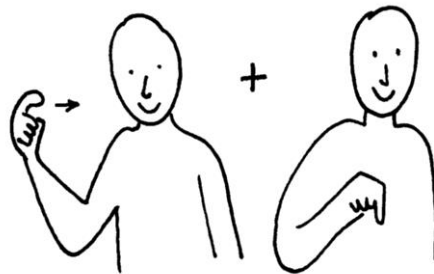
- 1. Hold up your thumb.*
- 2. Touch your opposite shoulder with your finger tips and then move your hand to the other shoulder.*

Good afternoon



- 1. Hold up your thumb.*
- 2. Hold your middle finger and index finger near your mouth and then move them away from you.*

Come here



- 1. Beckon the person(s) to you with your index finger.*
- 2. Point down.*

Goodbye



Wave your hand.

No



Pinch the first two fingers and thumb and move them to the side.

Please



Point your hand to your mouth and then move your hand away from your mouth.

Sorry



Make a small circular movement against your chest with a clenched fist.

Thank you



Point your hand to your mouth and then move your hand away from your mouth.

Well done



Hold up your thumb. (Hold up both thumbs for more emphasis.)

Yes



Hold up a clenched fist near your shoulder. Twist your fist forward.

Who uses British Sign Language (BSL)?

British Sign Language (BSL) is the most common form of sign language used in the United Kingdom. It is used by deaf people and their relatives. Each country in the world has its own sign language.

BSL is not a way of expressing English with gestures. It is a complete language in its own right, with its own vocabulary and grammar. BSL has many regional variations: signs used in Scotland may not be understood in southern England.

In the United Kingdom there are over 70,000 people who use BSL.

Learn British Sign Language